

Iris Melanocytoma

Category(ies): Glaucoma, Iris

Contributor: [Thomas J.E. Clark, MD](#)

Photographer: Antoinette Venckus, CRA (fig. 1); and [Wallace L.M. Alward, MD](#) (fig. 2)

A melanocytoma is a specific type of uveal tract nevus, termed "magnocellular nevus", characterized clinically by its jet-black coloration and histologically by its heavily pigmented, large, polygonal, bland cells. Clinically, melanocytomas most often present as asymptomatic pigmented lesions.

Melanocytomas can occur anywhere along the uveal tract, but are most commonly found in the juxtapapillary region of the choroid (see related links).

Traditionally viewed as benign lesions, transformation into a malignant melanoma can occur. Malignant transformation rates for choroidal melanocytomas have been reported at 2%.⁽¹⁾

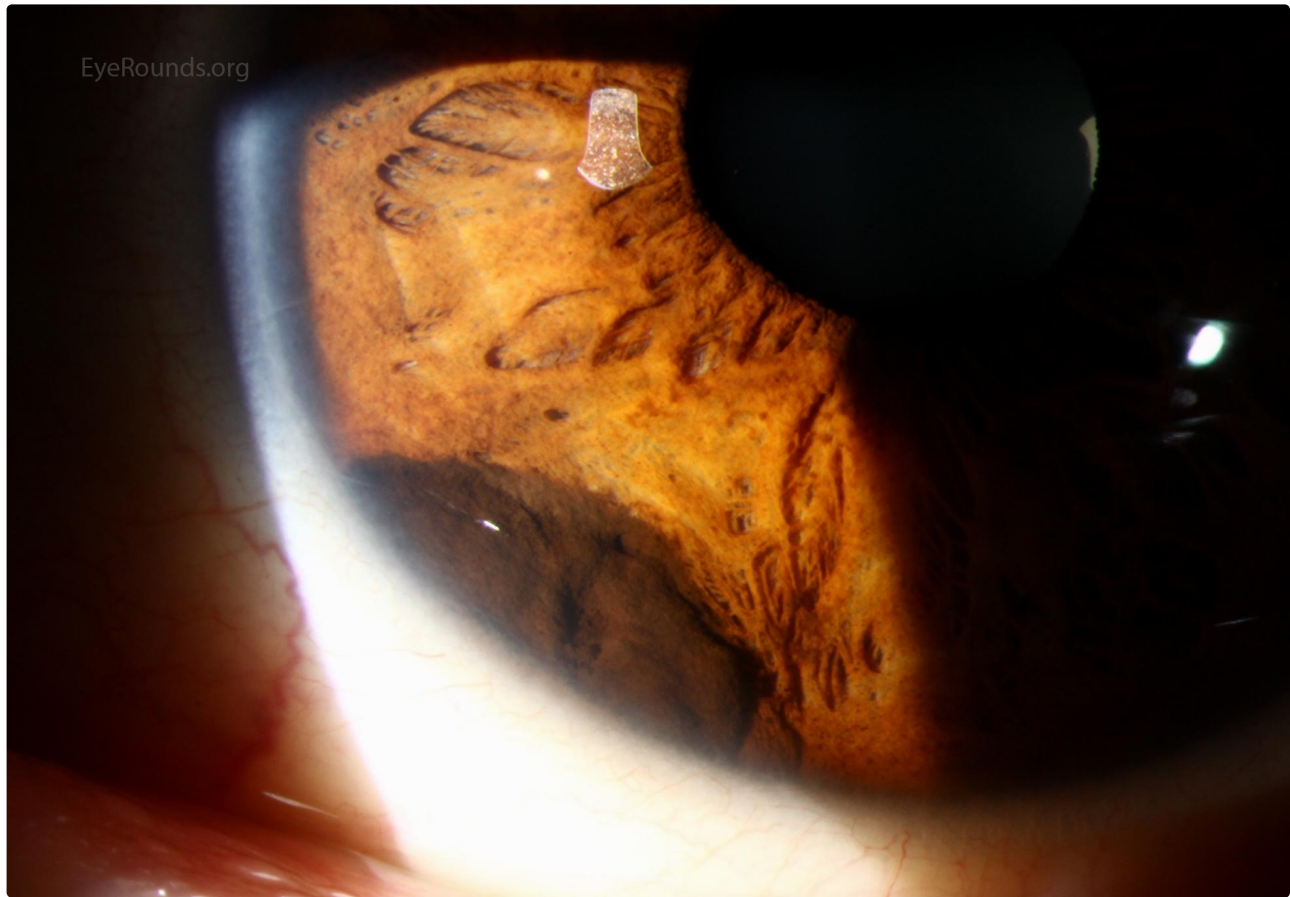


Fig 1A: Slit lamp examination, demonstrates a dark brown, pigmented lesion in the peripheral iris extending from 6:30 to 8 o'clock. Notably, there is no neovascularization of the iris and the pupil is round. Diagnosis was confirmed by biopsy.

[Enlarge](#)

[Download](#)

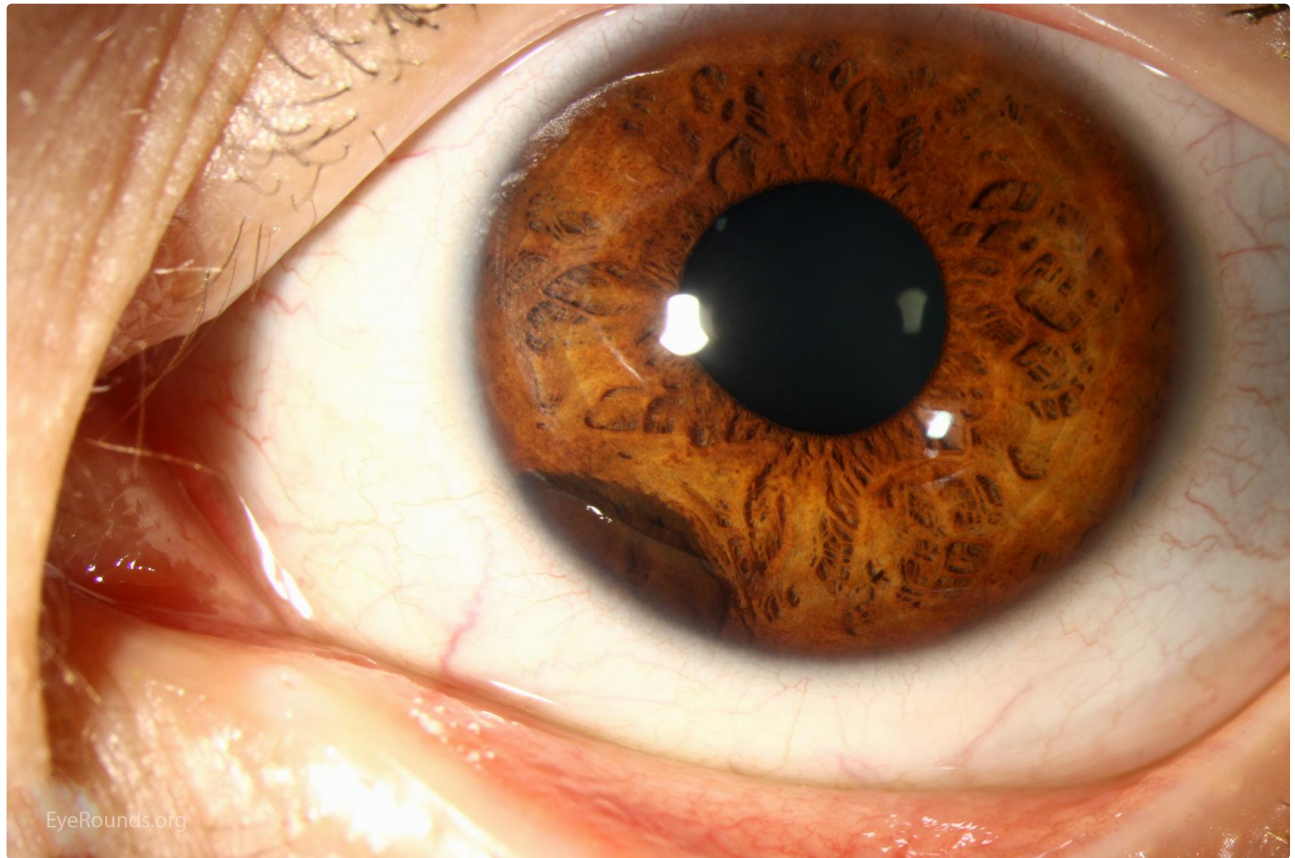


Fig 1B

[Enlarge](#)

[Download](#)

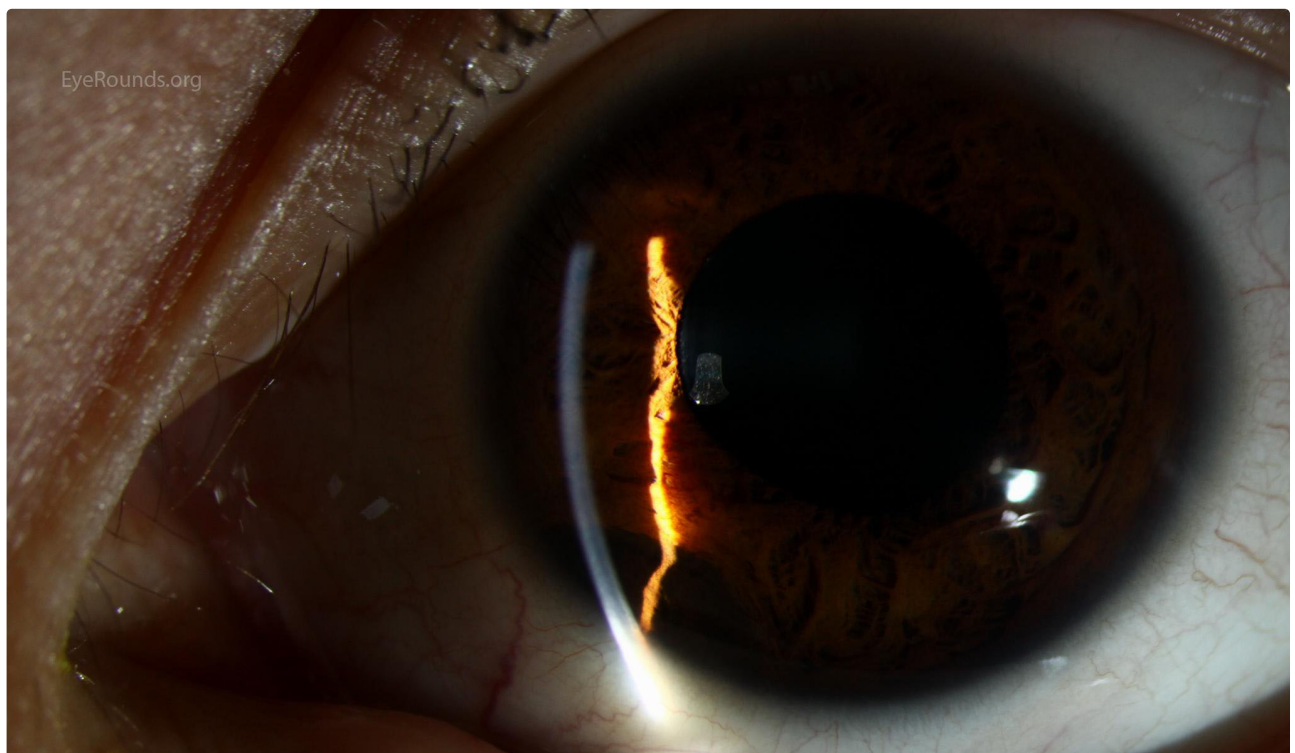




Fig 1C

[Enlarge](#)

[Download](#)

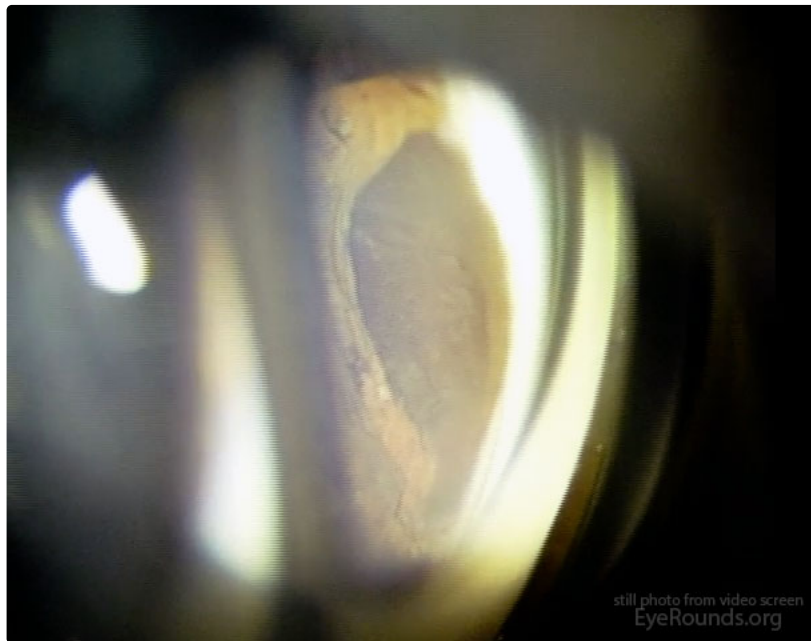


Figure 2: Gonioscopy examination demonstrates an elevated, dark brown lesion extending from 7 to 8 o'clock without spread into the surrounding trabecular meshwork.

[Enlarge](#)

[Download](#)

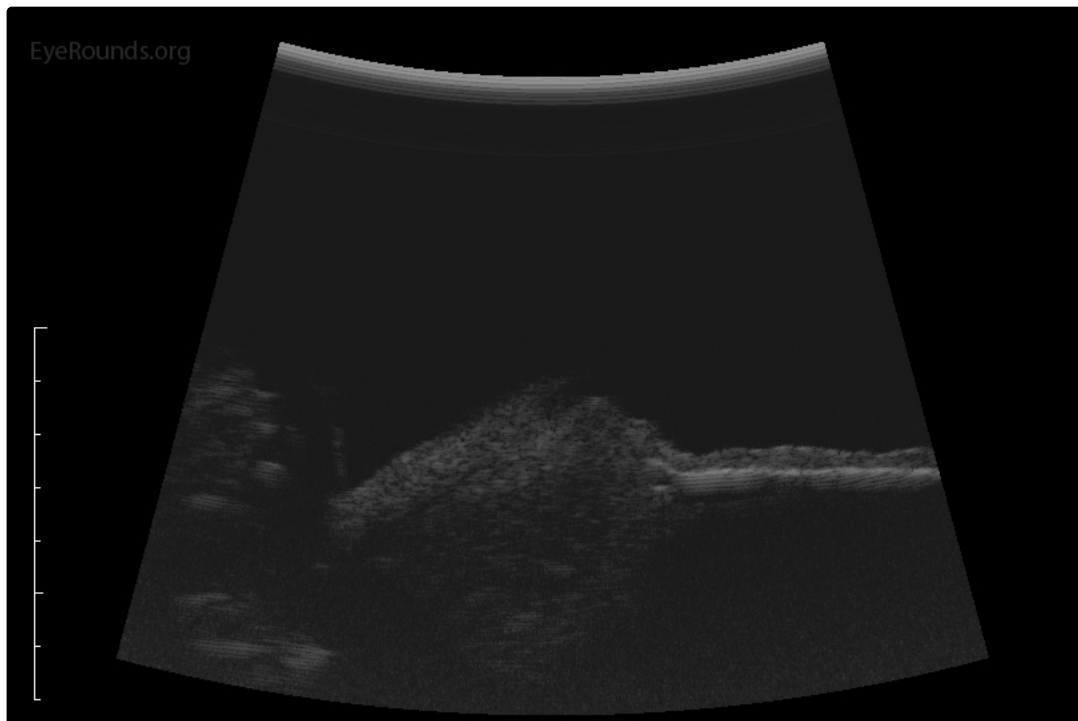


Figure 3: B-scan ultrasonography shows an iris lesion with low internal reflectivity and no vascularity.

[Enlarge](#)

[Download](#)

Reference:

1. Shields JA, Demirci H, Mashayekhi A, Shields CL. Melanocytoma of optic disc in 115 cases: the 2004 Samuel Johnson Memorial Lecture, part 1. Ophthalmology 2004;111:1739-46.

Image Permissions:



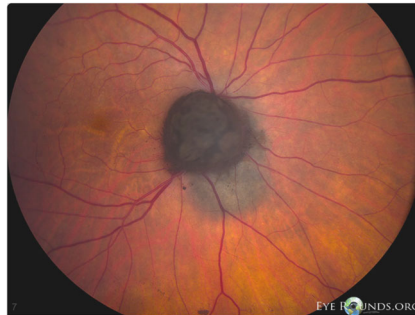
Ophthalmic Atlas Images by EyeRounds.org, The University of Iowa are licensed under a [Creative Commons Attribution-NonCommercial-NoDerivs 3.0 Unported License](https://creativecommons.org/licenses/by-nc-nd/3.0/).



Related Articles



[Related Atlas Entry: Melanocytoma](#)



[Related Atlas Entry: Melanocytoma with associated choroidal nevus](#)

Address

University of Iowa
Roy J. and Lucille A. Carver College
of Medicine
Department of Ophthalmology and
Visual Sciences
200 Hawkins Drive
Iowa City, IA 52242

[Support Us](#)

Legal

Copyright © 2019 The University of
Iowa. All Rights Reserved
[Report an issue with this page](#)
[Web Privacy Policy](#) |
[Nondiscrimination Statement](#)

Related Links

[Cataract Surgery for Greenhorns](#)
[EyeTransillumination](#)
[Gonioscopy.org](#)
[Iowa Glaucoma Curriculum](#)
[Iowa Wet Lab](#)
[Patient Information](#)
[Stone Rounds](#)
[The Best Hits Bookshelf](#)

EyeRounds Social Media

Follow



Receive notification of new cases,
[sign up here](#)
[Contact Us](#)
[Submit a Suggestion](#)